

# ORBi-TEL<sup>7</sup>

## NetWatch PABX Alarm Management Module

NetWatch is an optional switch and environment alarm management module of ORBi-TEL<sup>7</sup>. With this new and innovative application users are immediately notified of fault conditions or pending trouble across the voice estate. Access to alarm information is available from your web browser in the same easy-to-use style as other ORBi-TEL<sup>7</sup> modules.

Authorised users access NetWatch from the ORBi-TEL<sup>7</sup> menu. This allows access to self designed maps for site, site connection and alarm display. Sites are listed as they are defined in the ORBi-TEL<sup>7</sup> database and a range of images are provided to allow the user to customise their maps.

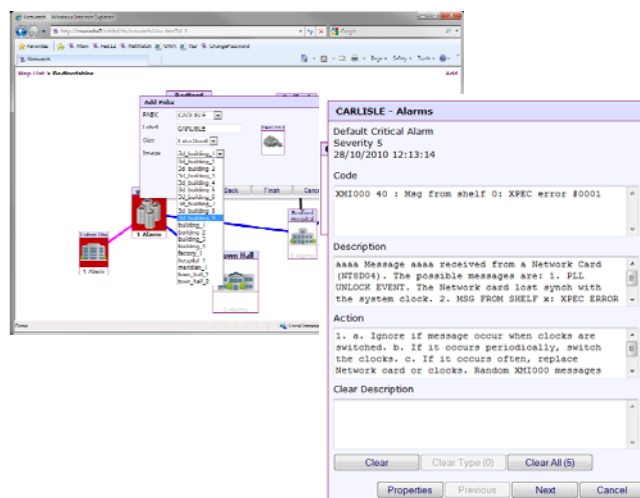
NetWatch checks for alarms every 5 seconds and as they are received they are matched against a powerful alarm translation table. There is a table for each PABX or switch type in the Network. Alarm severity and associated description is user definable.

When an alarm occurs the user simply double clicks on the site image. This will open a new window with a dialogue box for each alarm at that site. These are displayed in order of severity.

The following data is then displayed in the dialogue box:

- ⇒ Alarm id
- ⇒ Date/time
- ⇒ Alarm code
- ⇒ Severity
- ⇒ Description
- ⇒ Action

All cleared alarms are stored in the data base for analysis through the report utility.



**Nu Technologies**

**3 Imperial Court, Laporte Way, Luton, Bedfordshire, LU4 8FE**

**Tel 01582 814700 Fax 01582 814701**

**www.nut.eu.com**