

ORBi-TEL⁷

Fraud Identification Module

The Fraud Identification Module (FIM) is an optional management module of ORBi-TEL⁷. With this new and innovative application, users are immediately notified of any potential fraud conditions across the voice estate. Users set their own thresholds and when these are exceeded alarm information is available from your web browser in the same easy-to-use style as other ORBi-TEL⁷ modules.

Authorised users access FIM from the ORBi-TEL⁷ menu. This allows access to self-designed maps for site, site connection and alarm display. Sites are listed as they are defined in the ORBi-TEL⁷ database and a range of images is provided to allow the user to customise their maps.

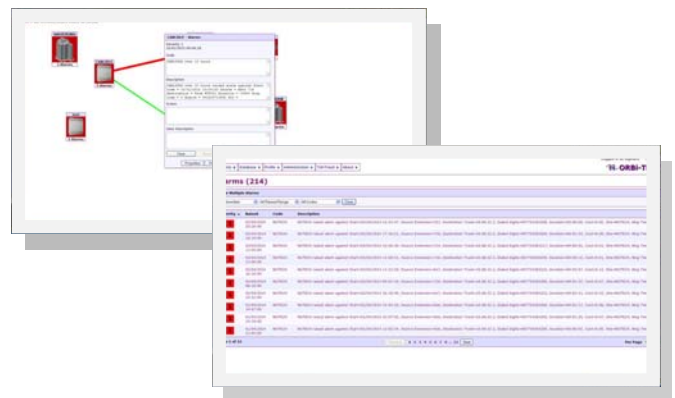
Checks are made every 5 seconds for activity that exceeds your thresholds i.e. high cost calls, long duration calls or calls to certain geographic areas. If a call or calls exceed your threshold details are sent to predefined email addresses and/or displayed on a map and listed by priority, date, code and description. The relevant site icon will flash red on the map indicating the presence of an alarm. The user simply double clicks on the site image. This will open a new window where the user is able to

step through all alarms and clear down when the appropriate action has been taken.

The following data is displayed in the dialogue box:

- ⇒ Site
- ⇒ Date/time alarm raised
- ⇒ Start date/time of call
- ⇒ Source
- ⇒ Destination
- ⇒ Dialed Digits
- ⇒ Duration
- ⇒ Cost
- ⇒ Ring Time

All alarms are stored in the database for analysis through the report utility.



Nu Technologies

3 Imperial Court, Laporte Way, Luton, Bedfordshire, LU4 8FE

Tel 01582 814700 Fax 01582 814701

www.nut.eu.com